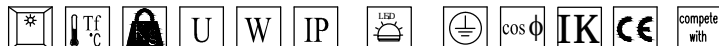
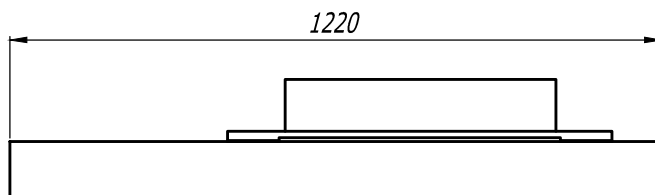
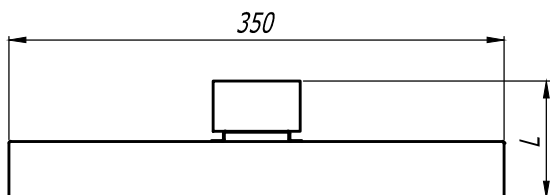


Mounting and operating instructions

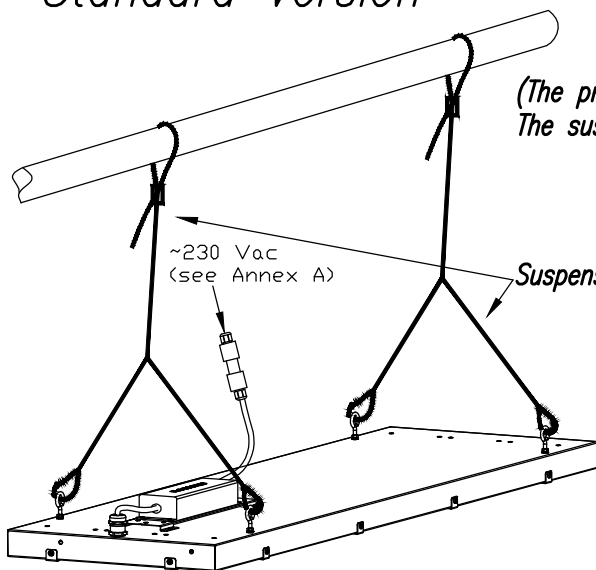


FIRADS-17 2RX4BX33LED 4K 14KLM	●	-5'..45'	13.5	~230V	108	65	LED	●	0.94	IK 06	●	60598-1
FIRADS-17 2RX4BX33LED 4K 14KLM DA	●	-5'..45'	13.5	~230V	122.6	65	LED	●	0.94	IK 06	●	60598-1
FIRADS-17 2RX4BX33LED 5K 14KLM	●	-5'..45'	13.5	~230V	106	65	LED	●	0.94	IK 06	●	60598-1
FIRADS-17 2RX4BX33LED 5K 14KLM 1H/3H	●	-5'..45'	13.5	~230V	102	65	LED	●	0.94	IK 06	●	60598-1 60598-2-22
FIRADS-17 3RX4BX33LED 4K 20KLM	●	-5'..45'	13.5	~230V	135.4	65	LED	●	0.94	IK 06	●	60598-1
FIRADS-17 3RX4BX33LED 4K 20KLM 1H/3H	●	-5'..45'	13.5	~230V	135.4	65	LED	●	0.94	IK 06	●	60598-1 60598-2-22
FIRADS-17 3RX4BX33LED 4K 23KLM	●	-5'..45'	13.5	~230V	161.5	65	LED	●	0.94	IK 06	●	60598-1
FIRADS-17 3RX4BX33LED 4K 23KLM 1H/3H	●	-5'..45'	13.5	~230V	161.5	65	LED	●	0.94	IK 06	●	60598-1 60598-2-22
FIRADS-17 3RX4BX33LED 4K 22KLM DALI	●	-5'..45'	13.5	~230V	140	65	LED	●	0.94	IK 06	●	60598-1
FIRADS-17 3RX4BX33LED 4K 22KLM DALI S	●	-5'..45'	13.5	~230V	140	65	LED	●	0.94	IK 08	●	60598-1
FIRADS-17 3RX4BX33LED 4K 20KLM S	●	-5'..45'	13.5	~230V	135.4	65	LED	●	0.94	IK 08	●	60598-1
FIRADS-17 2RX4BX33LED 5K 14KLM PMMA	●	-5'..45'	13.5	~230V	106	65	LED	●	0.94	IK 06	●	60598-1



	Without emergency lighting	With emergency lighting
L	90	160

Standard Version



(The product is not delivered with suspension system – cables)  
The suspension system shall support a mass of:

- 68 kg for version without emergency lighting
- 80 kg for version with emergency lighting

Suspension cable L = 3m with Gripple type carabiner (optional)

Attention! For the emergency lighting version, the beneficiary has to follow the routine tests listed in IME-1922!  
Opening the optical void product warranty!



Caution, risk of electric shock!

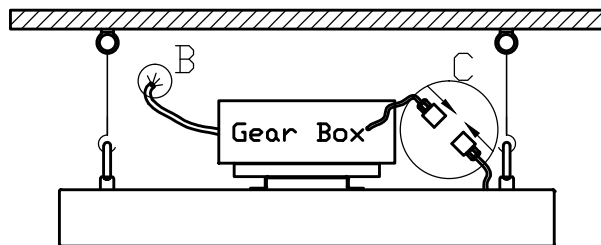
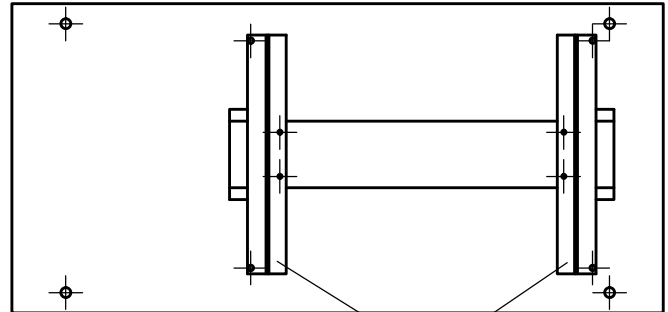
All installation and maintenance operations will be performed in absence of operating voltage and only by authorized personnel!

The light source contained in this luminaire shall only be replaced by the manufacturer or his service agent or a similar qualified person.

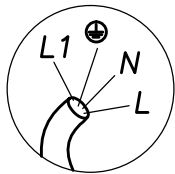


This symbol applied to the product is in accordance with European Directive 2002/96 / EC on waste electrical and electronic equipment resulting from the dismantling of used products and indicates that the product is separately collected. To prevent the destruction of the environment and human health, please do not remove this product as unsorted waste. For environmentally safe recycling, users of electrical and electronic equipment must hand over their waste to selective collection points specifically designated by local government authorities.

## Mounting and operating instructions

*Version with emergency lighting*Suspended mounting with shackle  $\varnothing 15$  (supplied with the product)*(The product is not delivered with suspension system – cables)*Z shaped profiles  
(for emergency gear box)

## Detail B

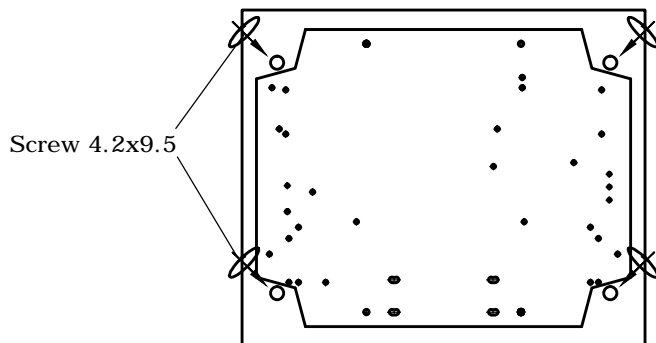
Connecting to mains:  
~230 Vac

Connecting wires in power clamp:

-with emergency lighting:

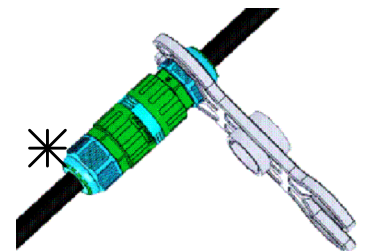
- |                   |                                 |
|-------------------|---------------------------------|
| Black Wire        | - Interruptible phase <b>L1</b> |
| Green-Yellow Wire | - Ground $\oplus$               |
| Grey/Blue Wire    | - Neutral <b>N</b>              |
| Brown Wire        | - Permanent phase <b>L</b>      |

Gear box is mounted by the customer using the 4 fixing screws 4.2x9.5 (included with the product) on two Z shaped profiles.



Screw 4.2x9.5

The connection between the luminaire and the emergency gear box is made by two "C" connectors; connect the two connectors, then thread the fixing ring "TH387" in the direction "CLOSE"; Check that the two nuts (\*) are tightened at 2,5Nm torque.

**Attention!** For the emergency lighting version, the beneficiary has to follow the routine tests listed in IME-1922!

Opening the optical void product warranty!

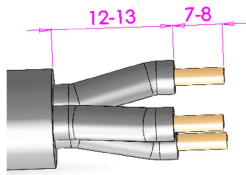
All installation and maintenance operations will be performed in the absence of electrical voltage and only by authorized persons!



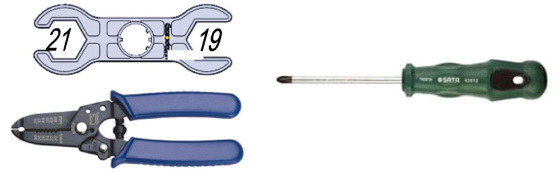
This symbol applied to the product is in accordance with European Directive 2002/96 / EC on waste electrical and electronic equipment resulting from the dismantling of used products and indicates that the product is separately collected. To prevent the destruction of the environment and human health, please do not remove this product as unsorted waste. For environmentally safe recycling, users of electrical and electronic equipment must hand over their waste to selective collection points specifically designated by local government authorities.

# Annex A - Connecting to mains through fast connector with IP68 protection

## 1. Wire Stripping

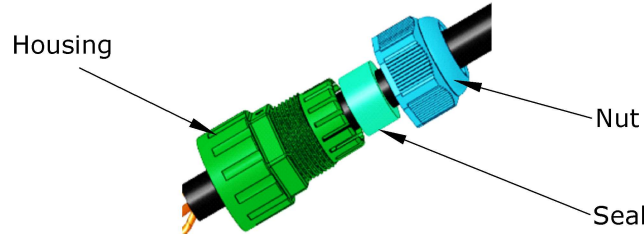


1.1 Cable type: H05RN-F 3x0,75+2,5mm<sup>2</sup>, thickness  $\Phi$  7+  $\Phi$  9,5mm;  
1.2 Tools: Wire stripper, Screwdriver, 19mm/21mm Wrench.

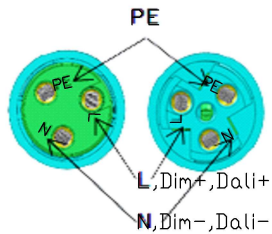


## 2. Installing cable into connector

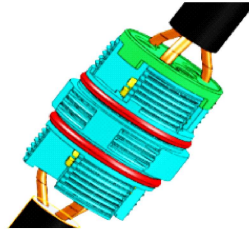
### 2.1 Insert the cable through connector:



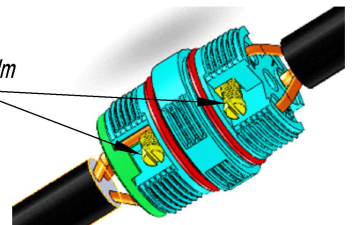
### 2.2 Connect the wires to corresponding terminals:



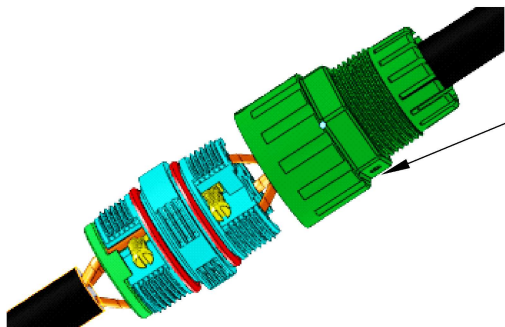
Mains connection / Dimming:  
L = Line / Dim+ / Dali+  
N = Neutral / Dim- / Dali-  
PE=Ground



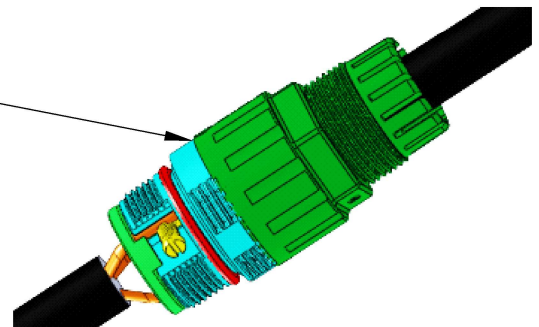
Tightening torque:  $0,8 \pm 0,1$  Nm



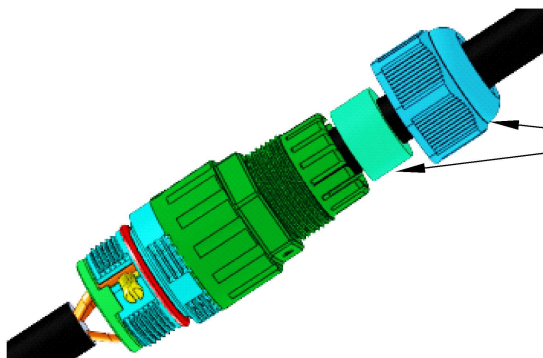
### 2.3 Screw Housing to Body:



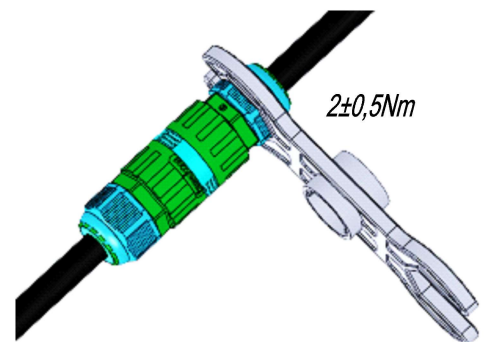
Screw the housing until it touches the connectors body



### 2.4 Insert the seal into the housing and tighten the nut at torque:



Insert the seal and tighten the nut to  $2 \pm 0,5$  Nm torque



### 2.5 Installing the cable into connector is identical on both sides



This symbol applied to the product is in accordance with European Directive 2002/96 / EC on waste electrical and electronic equipment resulting from the dismantling of used products and indicates that the product is separately collected. To prevent the destruction of the environment and human health, please do not remove this product as unsorted waste. For environmentally safe recycling, users of electrical and electronic equipment must hand over their waste to selective collection points specifically designated by local government authorities.